

QUA FARC



February 2026

Franklin Amateur Radio Club Inc.
NZART Branch 10

VOLUME 35 ISSUE 2

President: Steve Doell ZL1TZP
Vice President: Steve Spring ZL1SPR
Secretary: Tom McDonald ZL1TO Ph. 09 238 8580
Committee Members: Mike Jane ZL1UOM, Ted Doell ZL1BQA, Gary Landon ZL1WGL
Examiner: Tom ZL1TO
Web page: <http://www.qsl.net/zl1sa>
Webmaster: Steve ZL1TZP

Committee meets on the first Tuesday of each month (excepting January) at 7.30 pm in the clubrooms.

Subscriptions: Individual \$30, Family \$40, due December
See club secretary for bank account number

Nets: HF Sunday 9 am, 3.700 MHz (Mike ZL1UOM); VHF Sunday 9.30 am, 146.900 MHz (Steve ZL1TZP); DMR on TalkGroup 5301, Wednesday 7.30 pm (Steve ZL1TZP)

Meetings: Club meetings are on the third Tuesday each month in the clubrooms, 19 Stadium Drive, Pukekohe, at 7.30 pm. Visitors welcome.

NEXT MEETING

The February meeting will be held on Tuesday 17th. After the usual general reports and business Steve, ZL1TZP will address us on radio aspects of his recent trip to Japan. In addition final arrangements for the club effort in Jock White HF Field Days will be sorted.

VHF FIELD DAY CONTEST

Our Club, ZL1SA, competed for the first time in many years. We were located at the headquarters of Bombay Scouts on a ridge not far from the boundary separating Auckland from Waikato. Team members were Steve ZL1TZP, John ZL1HEX, Simon ZL3XL and Tom ZL1TO. A summary of results showing our performance is printed below. We did not enter in all the available bands and Franklin was not winner of special considerations – such as greatest 2 m DX (which went to ZL1AA for a 2123 km contact with VK2T). There were 51 stations in total. The result, from our perspective, may be summarised:

	Overall		6 m		2 m		70 cm		23 cm	
	Points	Place	Points	Place	Points	Place	Points	Place	Points	Place
Winner	4671	ZL1GSG	418	ZL1SA	1907	ZL1GSG	1080	ZL1GSG	1697	ZL1AA
ZL1SA	1495	5/10		1/5	869	3/9	12	7/8	196	5/8

NEW ZEALAND ASSOCIATION
OF RADIO TRANSMITTERS Inc



SERVING NZ SINCE 1926

NZART CENTENARY ACTIVITIES UPDATE

The NZART Centenary website can now be accessed from the NZART homepage website at here: <https://nzart.org.nz/centenary/>

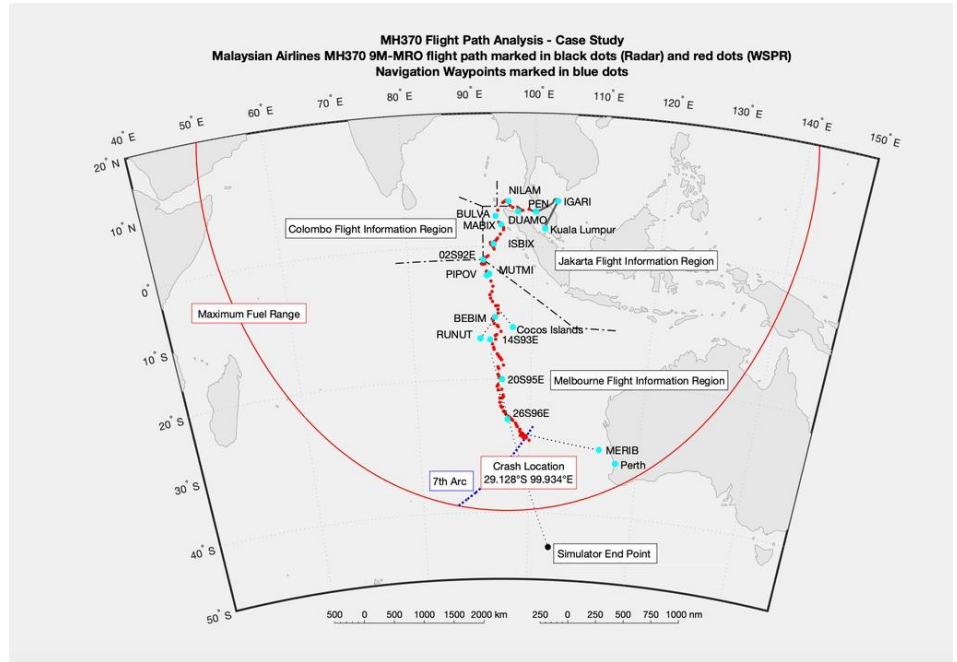
All celebratory activities will be announced as they near launch dates.

The Conference 2026 registration form will be available in the very near future, from the NZART web site. It will also be included in the March/April issue of Break In

WSPR PROMOTED AS A WAY OF LOCATING MISSING FLIGHT MH370

A television documentary titled *Why Planes Vanish: The Hunt for MH370* was aired last week.

It has been widely accepted that radio on MH370 made handshakes indicating it came down near the 7th arc of the Inmarsat satellite above the Indian Ocean. The database of amateur WSPR is claimed to help locate the downing near 36.128 S 939.934 E, and just in case that turns out to be correct, here is a map of the final track suggested by Richard Godfrey.



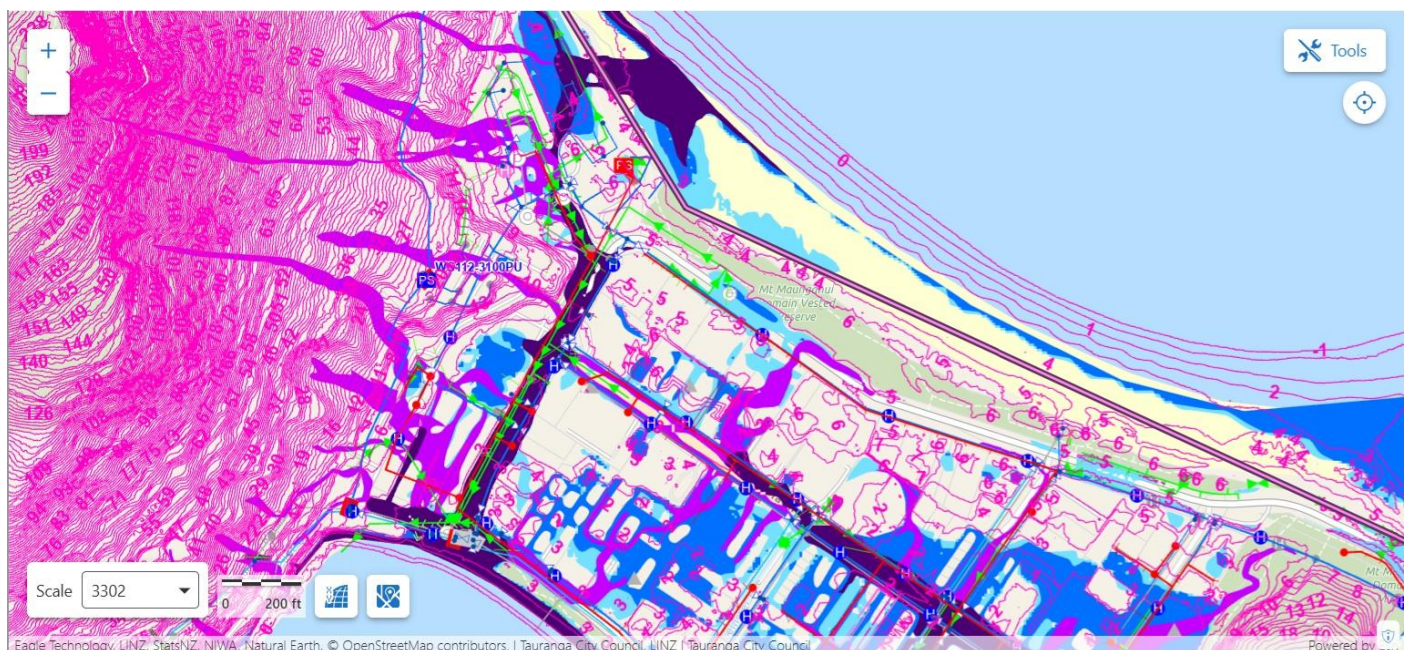
LANDSLIDES ARE A HAZARD IN AUCKLAND TOO

Can someone please let members know if they know where to look for a map of landslide hazards in Auckland? Your editor can find maps of flood, tsunami and coastal inundation, but as yet nothing for landslides.

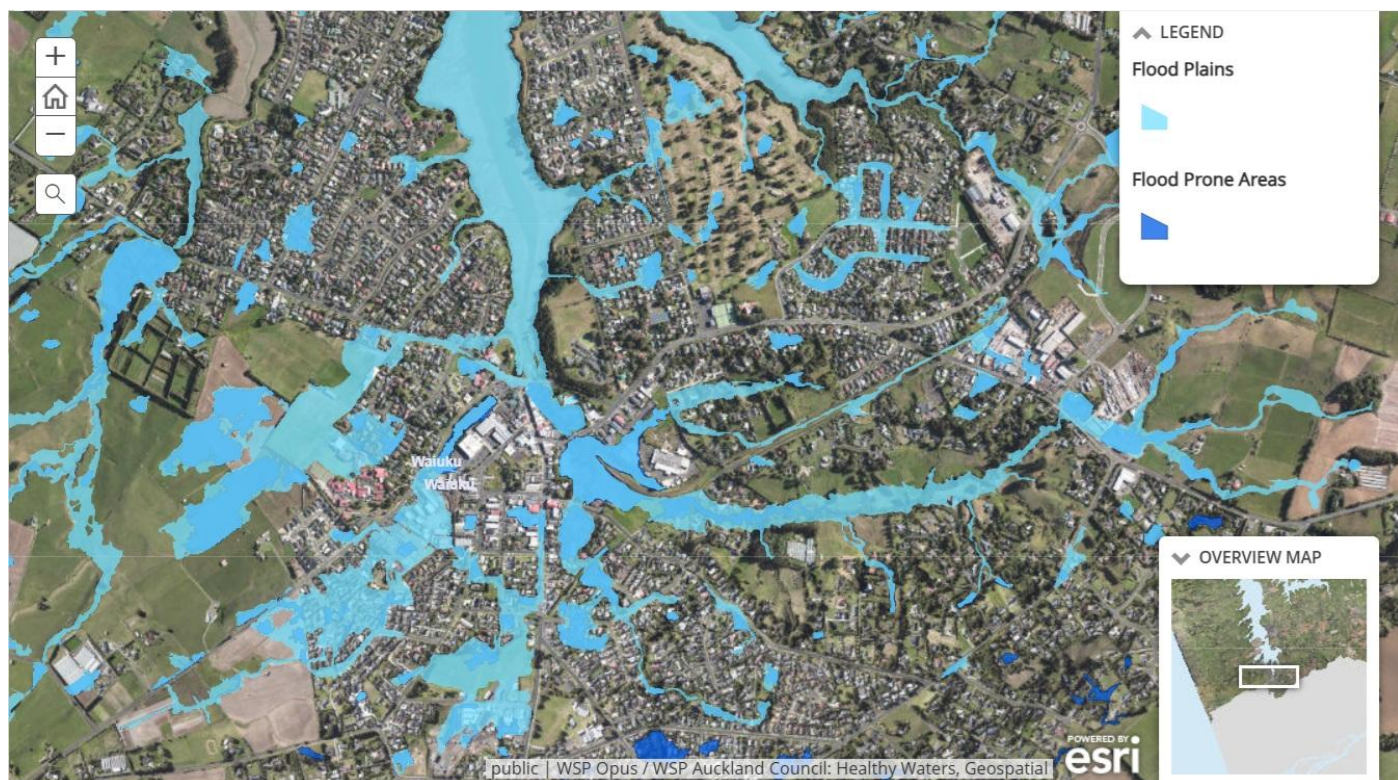
It is noted that Tauranga Council has included layers for landslide on their web site. So anyone could check that hazard prior to the tragic event at Mt Maunganui on Thursday 22 January. Tauranga appears to have used the same geotechnical resource that Auckland uses for its hazard maps so it ought to be possible to get the wanted Auckland map.

Below is a landslide hazard map for Mt Maunganui, together with an additional layer of buried infrastructure. The height contours are at 1 m spacing.

In



And as Pukekohe hams have already seen their flood hazard, in a recent QUA, a flood hazard map for Waiuku is included next for comparison, this month.



FRANKLIN JUNK SALE

There will be plenty of used equipment available this year. So the Franklin Junk Sale will take place, at its usual time – the third Tuesday evening of July, which is Tuesday 21 July, starting promptly at 7:30 pm. The sale will be in a conducted sale format. Ted ZL1BQA wishes to take a break from his sales conductor job, so that position will be picked up by an apprentice.

OTHER SALES

Te Puke Branch 53 of NZART, 24th Market Day. Paengaroa Community Hall, 4 Old Coach Road, Paengaroa. (GPS Coordinates: 37.49S 176.24E)

Venue opens for Vendors from 06.30am.

Table Prices Pre-Sale 1.8 Table \$20.00, On the Day \$25.00

Pre-Sale ½ Table \$12.00, On the Day \$15.00.

Bank Account details for Table Payments:- 03 0474 0030113 00

Please use your Call Sign as Reference.

Sale time 10.00am

Door Charge \$2.00 per person to help recover costs.

Breakfast Available from 07.30am to 11.00am.

For further information & Table Booking's, Contact Syd Rowe ZL1LWR

Phone (07) 533 1029, Mobile: 0272488664,

Email:- sydrowe@xtra.co.nz

Accommodation available at the Junction Motel, State Highway 33, Paengaroa.

North Shore Radio Club used equipment sale starts 10 am Saturday March 14. This will be a big clearance of equipment and components. • Large clearance of an estate • Surplus club radio and test equipment for

sale • Very high quality fully restored collectors equipment • Extensive selection of electronic components
• Food and refreshments available on site to purchase • Eftpos available • A \$2.00 entry fee buys a raffle ticket • \$15.00 Buys a sales table (entry from 8 am).

RWB the national Icom distributor will be onsite with a display of amateur equipment. ♦ Market day specials will be on offer. ♦ Extensive radio experience. Give RWB a call (09 274 4062) if you want them to bring any specific items.

Visit WWW.NSRC.NZ for contact details or email sales@nsrc.nz

There will be an informal YL get together, perhaps around 11 am.

SHACK WINDOW

We had the misfortune to lose both shack windows, broken recently, and they were replaced on 4 February. Steve ZL1TZP donated replacement venetian blinds. Nothing was taken from within the shack

It is appreciated if any members driving past the clubhouse would let us know of anything amiss. A month ago the tag *GECKO* appeared on a different window, and the back wall. So it would be interesting to find out who uses that identity.